



STAY CURRENT

ISO 9001 CERTIFIED

MAY 2016

TABLE OF CONTENTS

Trade Shows & Events	1
Featured Item of the Month	2
Tech Tips	3
Price Reduced Components.....	5
Air & Electrical Components.....	6
Cab & Chassis Components.....	7
Drive Train Components	8
Engine Components	9-12

TRADESHOWS & EVENTS

VIPAR Heavy Duty Annual Business Conference
October 16-21, 2016 - Orlando, FL

HDAW 2017
January 23-26, 2017 - Las Vegas, NV



HIGH PERFORMANCE PARTS

WORLD TESTED. PERFORMANCE PROVEN.

FEATURED ITEMS OF THE MONTH

NEW TEFLON COATED RANGE CYLINDERS

ADVANTAGES

IMPROVE STRENGTH | SMOOTHER OPERATION | LONGER LIFE



GRC-1729HP



GRC-1728HP

OEM REFERENCE	PAI REFERENCE	DESCRIPTION	APPLICATION
MAK 55KC420	GRC-1729HP	Range Cylinder	Mack T2070B / T2070D / T2130 / T2070A / T2070C / T2110B / T2080B / T318L / T2180 Transmissions
MAK 55KC421	GRC-1728HP	Range Cylinder	Mack T2110B / T309L / T310 / T310M Transmissions

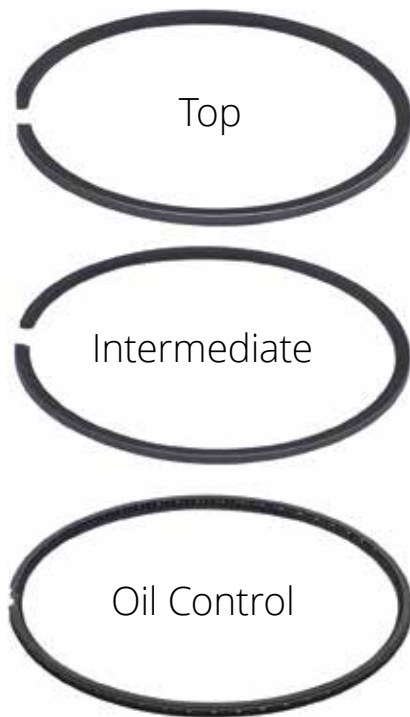
PAI Industries is now offering a line of new High Performance Products. These parts can be identified with the letter designation HP at the end of the part number. Ex: 111523 HP Piston Kit.



HIGH PERFORMANCE PARTS

WORLD TESTED. PERFORMANCE PROVEN.

TECH TIPS OF THE MONTH



This month's article covers the anti-friction coating that PAI is incorporating in our new HP ring sets.

The top piston ring is subjected to very high temperatures and cylinder pressures, which can produce microwelding. Microwelding is a phenomenon where the ring thrust face can become locked to the piston groove. When this occurs the ring can not flex in the liner bore and can result in galling and/or blow by. PAI's new proprietary process combats this problem.

ADVANTAGES

**LOWER FRICTION
LOWER HEAT
LONGER LIFE
BETTER FUEL ECONOMY
3 YEAR WARRANTY**

HIGH PERFORMANCE

PAI Industries is now offering a line of new High Performance Products. These parts can be identified with the letter designation HP at the end of the part number. *Ex: 111523 HP Piston Kit.*

PAI Industries, Inc. - World Tested. Performance Proven.

LOOK NO FURTHER.
PAI HAS YOUR SENSORS!

At PAI we offer over **200 SENSORS** to complement our part offerings,
better serve our customers and ensure optimum engine performance.



TEMPERATURE

PRESSURE

DUAL PRESSURE/TEMP.

LEVEL

POSITION

EGR

NOX

SPEEDOMETER



PAI INDUSTRIES, INC.
Sensors



Request Your Sensor Brochure Today! - PAI Ref# NOV1043



STAY CURRENT

ISO 9001 CERTIFIED

MAY 2016

PRICE REDUCED

Click Part# for more details

PAI REFERENCE	OEM REFERENCE	DESCRIPTION
FAS-0673	GDY 2B12-410	Air Spring
EVA-2653	MAK 691GC225M2	Relief Valve
EVA-2654	MAK 691GC225M	Relief Valve
ESP-3814	8813-V10NF1S5T38C5H	Power Steering Pump
MRT-5356	LVN 79045	Rotator
GGB-6212	MAK 751KB3493	Gear
BBG-7963	MAK 61KH47BP12	Gear
ECH-8668	MAK 160AX515P11	Hose
EM71500	MAK 62AX172	Cone
060071	CUM 3901774	Flywheel Gear
111709	CUM 4089944	Piston Ring Kit
131591	CUM 3076226	Gasket
141317	CUM 3800828	Lube Pump Kit
192126	CUM 4026657	Valve Guide
192148	CUM 3606856	Exhaust Valve
370009	CAT 136-8882	Crankshaft
370037	CAT 232-3235	Rod Bearing
370038	CAT 232-3236	Rod Bearing
381818	CAT 172-7766	Water Pump Assy.
391949	CAT 2W2621	Intake Valve
391966	CAT 224-3030	Exhaust Valve
403934	NAV 1664729C7	Engine Mount
480061	NAV 1841217C91	Fuel Regulator Kit
481862	NAV 2508700C92	Coolant Tank
621130	DDC 23506325	Coolant Hose
640008	DDC 23509744	Screw
640021	DDC 8929357	Screw
641280	DDC 23522282	Oil Pan
741432	FTL 14-12098-000	Steering Link

PAI REFERENCE	OEM REFERENCE	DESCRIPTION
804113	MAK 4333-3504540C1	Fuse
804115	MAK 985AM14	Fuse
806863	N/A	Power Divider Kit
808100	MAK 31KN415	Outer Cam
840017	VOL 21344754	Screw
840018	VOL 21344765	Screw
940085	ROK A-1228-X-1350	Bearing Kit
940154	ROK B-41684-1	Gear Set
ISM140-038	N/A	Engine Kit
ISX102-017	N/A	Engine Kit

Please Note: OEM reference numbers in bold indicate parts that are supplied from OEM.



STAY CURRENT

ISO 9001 CERTIFIED

MAY 2016



OEM REFERENCE	PAI REFERENCE	DESCRIPTION
MAK 1MR4323M16	804185	Wiper Rocker Switch
Application: Mack CV Models		

AIR & ELECTRICAL

CAB & CHASSIS

DRIVE TRAIN

ENGINE

Please Note: OEM reference numbers in bold indicate parts that are supplied from OEM.



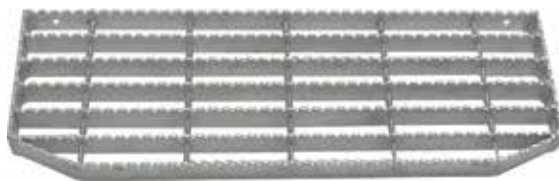
STAY CURRENT

ISO 9001 CERTIFIED

MAY 2016



OEM REFERENCE	PAI REFERENCE	DESCRIPTION
MAK 17QF481M	FTR-4622-220	Torque Rod(22" Center to Center)
Application: Mack Multiple		



803889 Shown



803882 Shown

OEM REFERENCE	PAI REFERENCE	DESCRIPTION	APPLICATION
MAK 85QM4218	803888	Upper Cab Step (21.38 in Long)	Mack 2000 - 2015 MR / MU Models
MAK 85QM4219	803889	Lower Cab Step (21.44in Long)	Mack 2000 - 2015 MR / MU Models
MAK 32QM4231	803882	Cab Step End Plate	Mack 2000 - 2015 MR / MU Models



OEM REFERENCE	PAI REFERENCE	DESCRIPTION
MAK 4379-RD109580	804059	Heater Core
Application: Mack DM/R/RB/RD/RW/U Models		

Please Note: OEM reference numbers in bold indicate parts that are supplied from OEM.

AIR & ELECTRICAL

CAB & CHASSIS

DRIVE TRAIN

ENGINE



STAY CURRENT

ISO 9001 CERTIFIED

MAY 2016



OEM REFERENCE	PAI REFERENCE	DESCRIPTION
MAK 751KB3493	GGB-6212	Low Range Gear
Application: Mack Multiple		

AIR & ELECTRICAL

CAB & CHASSIS

DRIVE TRAIN

ENGINE



STAY CURRENT

ISO 9001 CERTIFIED

MAY 2016



380162 Shown

OEM REFERENCE	PAI REFERENCE	DESCRIPTION
CAT 1W1700	380162	Fuel Supply Pump
Application: Caterpillar 3406A, B & C Series		

OEM REFERENCE	PAI REFERENCE	DESCRIPTION
CAT 384-8612	380163	Fuel Supply Pump
Application: Caterpillar C15 / C16 / 3406E Series		



OEM REFERENCE	PAI REFERENCE	DESCRIPTION
CAT 223-7263	360460	Bare Cylinder Head
Application: Caterpillar C15 Acert		



OEM REFERENCE	PAI REFERENCE	DESCRIPTION
CAT 122-5053	390016	Solenoid Valve
Application: Caterpillar 3126		

Please Note: OEM reference numbers in bold indicate parts that are supplied from OEM.

AIR & ELECTRICAL

CAB & CHASSIS

DRIVE TRAIN

ENGINE



STAY CURRENT

ISO 9001 CERTIFIED

MAY 2016

AIR & ELECTRICAL

CAB & CHASSIS

DRIVE TRAIN

ENGINE



OEM REFERENCE	PAI REFERENCE	DESCRIPTION
CUM 3522080	381816	Water Pump Assembly
Application: Caterpillar 3100 / C7 Series		



OEM REFERENCE	PAI REFERENCE	DESCRIPTION
CUM 3804826	181909	Water Pump Assembly Includes Assembly (1)181908 Gaskets (1)131464 (1)131339 (1)131434 O-Ring (1)EGA-1660
Application: Cummins N14		



OEM REFERENCE	PAI REFERENCE	DESCRIPTION
CUM 3864178	181940	Thermostat(180°)
Application: Cummins QSB		



131863 Shown

OEM REFERENCE	PAI REFERENCE	DESCRIPTION
CUM 4089780	131863	Upper Gasket Kit
Application: Cummins QSB4		

OEM REFERENCE	PAI REFERENCE	DESCRIPTION
CUM 3800861	131888	Upper Gasket Kit
Application: Cummins QSM11		

Please Note: OEM reference numbers in bold indicate parts that are supplied from OEM.



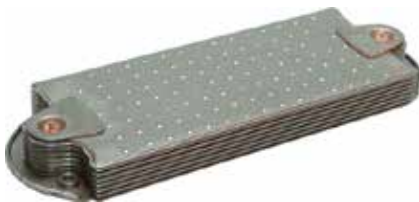
STAY CURRENT

ISO 9001 CERTIFIED

MAY 2016



OEM REFERENCE	PAI REFERENCE	DESCRIPTION
CUM 4925762	171658	Crankshaft Assembly
Application: Cummins ISX		



OEM REFERENCE	PAI REFERENCE	DESCRIPTION
MAK 20505537	841950	Oil Cooler
Application: Mack MP8		



OEM REFERENCE	PAI REFERENCE	DESCRIPTION
MAK 5MD599M3	EIH-2049	Inlet Hose(V-Clamp Ends) (3.17in ID x 4.13in OD x 8.63in Long)
Application: Mack / Volvo Multiple		

AIR & ELECTRICAL

CAB & CHASSIS

DRIVE TRAIN

ENGINE

Please Note: OEM reference numbers in bold indicate parts that are supplied from OEM.



STAY CURRENT

ISO 9001 CERTIFIED

MAY 2016



OEM REFERENCE	PAI REFERENCE	DESCRIPTION
MAK 240GB5271M4	841204	Oil Pan
Application: Mack ASET / E-TECH		

AIR & ELECTRICAL



CAB & CHASSIS

OEM REFERENCE	PAI REFERENCE	DESCRIPTION
MAK 22195464	801152	Water Pump Housing
Application: Mack MP 8 / Volvo D13		

DRIVE TRAIN



ENGINE

OEM REFERENCE	PAI REFERENCE	DESCRIPTION
NAV 1842339R95	481208X	Turbocharger(Reman)
Application: International 2000-2015 DT466E & DT530E		